

BAKER HUGHES



Baker Atlas

FILE NO: 15368
APN NO: 27-001-80440
COMPANY: GRADIENT RESOURCES, INC.
WELL: 13-36
FIELD: FALLON 1
COUNTY: CHURCHILL
STATE: NEVADA

Ver. 3.87

LOCATION:
354742 E 4390820 N MDM
UTM NAD 83 ZONE 11N

OTHER SERVICES
DISBUR
HDL/20L/CN
TEMP
BHP
GYRO

PERMANENT DATUM
LOG MEASURED FROM
DRILL MEAS. FROM
G.L. ELEVATION 3920 FT
K.B. 5 FT ABOVE P.D.
K.B.

ELEVATIONS:
KB 3925 FT
DF 3923 FT
OL 3920 FT

DATE	13-NOV-2010
RUN	TRIP
SERVICE ORDER	589640
DEPTH DRILLER	3927 FT
DEPTH LOGGER	3923 FT
BOTTOM LOGGED INTERVAL	3923 FT
TOP LOGGED INTERVAL	730 FT
CASING DRILLER	7 IN
CASING LOGGER	730 FT
BT SIZE	8.125 IN
TYPE OF FLUID IN HOLE	GEL BASED
DENSITY	8.5 LB/G
PH	11
SOURCE OF SAMPLE	MUD TANK
RM AT MEAS. TEMP.	1.62 CHAM
RM AT MEAS. TEMP.	1.30 CHAM
RM AT MEAS. TEMP.	2.28 CHAM
SOURCE OF RMF	MEASURED
RM AT BHT	0.52 CHAM
TIME SINCE CIRCULATION	14 HOURS
MAX. RECORDED TEMP.	180 DEGF
EQUIP. NO.	ML 4232
RECORDED BY	M. GASTIN
WITNESSED BY	N. PETERSON

IN MAKING INTERPRETATIONS OF LOGS OUR EMPLOYEES WILL GIVE CUSTOMER THE BENEFIT OF THEIR BEST JUDGEMENT. BUT SINCE ALL INTERPRETATIONS ARE OPINIONS BASED ON INFERENCES FROM ELECTRICAL OR OTHER MEASUREMENTS, WE CANNOT, AND WE DO NOT GUARANTEE THE ACCURACY OR CORRECTNESS OF ANY INTERPRETATION. WE SHALL NOT BE LIABLE OR RESPONSIBLE FOR ANY LOSS, COST, DAMAGES, OR EXPENSES WHATSOEVER INCURRED OR SUSTAINED BY THE CUSTOMER RESULTING FROM ANY INTERPRETATION MADE BY ANY OF OUR EMPLOYEES.

REMARKS

RUN 1 TRIP 2: GYRODATA GYRO WAS HOISTED ON RUN 1 TRIP 1

CALIPER VERIFIED IN CASING

WELL WAS LAST CIRCULATED ON 11/12/10 AT 16:30, REACHED BOTTOM ON 11/13/10 AT 6:00, STARTED RECORDING MAIN PASS AT 8:45

MAX TEMP THERMOMETER RANGE 100 TO 400 DEG F READ: 180 DEG F

MAX TEMP THERMOMETER RANGE 100 TO 400 DEG F READ: 181 DEG F

DT MATRIX = 51.3 USEC/FT

THANK YOU FOR CHOOSING BAKER ATLAS...THE BEST CHOICE!!!

CREW: KERN AND WILLIS

RIG: WELSCD #7

EQUIPMENT DATA

RUN	TRIP	TOOL	SERIES NO.	SERIAL NO.	POSITION
1	2	SNVL	3844KD	10332207	SNVFL
1	2	TIRM	3881KB	10217218	FREE
1	2	WTS	3514KB	368782	FREE
1	2	DSL	1328KB	10203001	FREE
1	2	CN	2446KA	10202048	FREE
1	2	ZDL	2234KA	173878	PAD / DE-CENTRALIZED
1	2	KNUT	3638KA	10143809	DOUBLE KNUCKLE
1	2	HDL	1515EA/MA	10340485/10088832	0.7" STOOD-OFF
1	2	CENT	4341KA	10500017	CENTRALIZED
1	2	CRT	4401KB	10080288	CENTRALIZED
1	2	AC ELEC.	1677EA	10366234	CENTRALIZED
1	2	AC REC.	1678MC	10338528	CENTRALIZED
1	2	AC ISO.	1678PB	10200307	CENTRALIZED
1	2	AC TRANS.	1678BA	10100348	CENTRALIZED
1	2	AC PWR.	1678FA	370675	CENTRALIZED
1	2	CENT	4341KA	10238054	CENTRALIZED
1	2	SLAM	3516KA	72848	CENTRALIZED
1	2	TEMP	2806KA	77805	CENTRALIZED

MAIN LOG 2"/100FT SCALE

ECLIPS 6.11 Aug 06, 2010

Sat Nov 13 10:58:35 2010

Perplot /main/62

Cplot

Plot_Cpp /main/16

Fileview 5.50

PARAMETER AND FILTER SUMMARY REPORT

FILE: /data/15358/w7711208.prm
 LOGGING MODE: DEPTH DIRECTION: UP
 TOP DEPTH: 722.000 ft BOTTOM DEPTH: 3528.843 ft

SYMMETRIC FILTER

MEASUREMENT TYPE	PARAMETER	VALUE	UNITS	INTERVAL (ft)	
Y AXIS CALIPER	FILTER ()	medium (1)		TOP	BOTTOM
TENSION	FILTER ()	medium (1)		"	"
GR	FILTER ()	medium (1)		"	"
CALIPER	FILTER ()	medium (1)		"	"
	FILTER (.h)	medium (1)		"	"
	FILTER (.l)	medium (1)		"	"
DT24	FILTER ()	light (2)		"	"

BOREHOLE & CEMENT

MEASUREMENT TYPE	PARAMETER	VALUE	UNITS	INTERVAL (ft)	
BIT SIZE	BIT SIZE	8.125	1n	TOP	BOTTOM

ACOUSTIC AVAN CORRELATION

MEASUREMENT TYPE	PARAMETER	VALUE	UNITS	INTERVAL (ft)	
MONOPOLE DELTA T	FORMATION TYPE	GENERIC (MEDIUM)		TOP	BOTTOM
	CORRELATION METHOD	WITH ROOT		"	"
	RESET TAPERS			"	"
	TAPER - LEFT END	50	us/ft	"	"
	TAPER - RIGHT END	180	us/ft	"	"
MONOPOLE COMPRESSIONAL	FLOOR (UNIV. OPTION)	0.050		"	"
	FORMATION TYPE	GENERIC (MEDIUM)		"	"
	CORRELATION METHOD	WITH ROOT		"	"
	RESET TAPERS			"	"
	TAPER - LEFT END	50	us/ft	"	"
MONOPOLE SHEAR	TAPER - RIGHT END	180	us/ft	"	"
	FLOOR (UNIV. OPTION)	0.050		"	"
	FORMATION TYPE	GENERIC (MEDIUM)		"	"
	GUIDE CURVE	DO NOT USE GUIDE		"	"

MONOPOLE STONLEY	RESET TAPERS				
	TAPER - LEFT END	100	us/ft	''	''
	TAPER - RIGHT END	100	us/ft	''	''
	FORMATION TYPE	GENERIC (MEDIUM)		''	''
DIPOLE SHEAR	RESET TAPERS			''	''
	TAPER - LEFT END	170	us/ft	''	''
	TAPER - RIGHT END	510	us/ft	''	''
	FORMATION TYPE	GENERIC (MEDIUM)		''	''
	CORRELATION METHOD	WITH ROOT		''	''
	GUIDE CURVE	DO NOT USE GUIDE		''	''
	RESET TAPERS			''	''
	TAPER - LEFT END	100	us/ft	''	''
	TAPER - RIGHT END	700	us/ft	''	''

ACOUSTIC POROSITY

MEASUREMENT TYPE	PARAMETER	VALUE	UNITS	INTERVAL (ft)	
ACOUSTIC POROSITY	POROSITY TYPE	WYLLIE		TOP	BOTTOM
	DTmatrix	51.30	us/ft	''	''
	DTfluid	180.00	us/ft	''	''
	DTshale	100.00	us/ft	''	''
	MOD. WYLLIE PARM	2.25		''	''
	MOD. R-H-G PARM	2.00		''	''
DELTA T CURVE SELECTION	DT24 SOURCE	FIRST ARRIVAL DT24		''	''

ACOUSTIC PICK CONTROL

MEASUREMENT TYPE	PARAMETER	VALUE	UNITS	INTERVAL (ft)	
DELTA-T REJECTION RANGE	REJECTION DTmin	40	us/ft	TOP	BOTTOM
	REJECTION DTmax	180	us/ft	''	''
FIRST ARRIVAL PICK	SEARCH START OFFSET {sfan1°}	174	us	''	''
	SEARCH START OFFSET {sfan2°}	174	us	''	''
	SEARCH START OFFSET {sfan3°}	174	us	''	''
	SEARCH START OFFSET {sfan4°}	174	us	''	''
	SEARCH WINDOW LENGTH	1577	us	''	''
	THRESHOLD FACTOR	0.30		''	''
	THRESHOLD MINIMUM {sfan1°}	1.8	pct	''	''
	THRESHOLD MINIMUM {sfan2°}	1.8	pct	''	''
	THRESHOLD MINIMUM {sfan3°}	1.8	pct	''	''
	THRESHOLD MINIMUM {sfan4°}	1.8	pct	''	''
	ES THRESHOLD	OFF		''	''

ACOUSTIC QUALITY CONTROL

MEASUREMENT TYPE	PARAMETER	VALUE	UNITS	INTERVAL (ft)	
CYCLE SKIP LIMIT	CYCLE SKIP LIMIT	100	us	TOP	BOTTOM
ACOUSTIC DIFF TEN LIMIT	DIFF TENSION LIMIT	500	lbf	''	''

ACOUSTIC WAVEFORM FILTER

MEASUREMENT TYPE	PARAMETER	VALUE	UNITS	INTERVAL (ft)	
WAVEFORM FILTER - DELTA T	SURFACE WAVE FILTER	ON		TOP	BOTTOM
	LOW FREQ CUTOFF	4000	Hz	''	''
	HIGH FREQ CUTOFF	20000	Hz	''	''
WAVEFORM FILTER - FULLWAVE	SURFACE WAVE FILTER	ON		''	''
	LOW FREQ CUTOFF	2000	Hz	''	''
	HIGH FREQ CUTOFF	20000	Hz	''	''
WAVEFORM FILTER - STONLEY	SURFACE WAVE FILTER	ON		''	''
	LOW FREQ CUTOFF	500	Hz	''	''
	HIGH FREQ CUTOFF	5500	Hz	''	''
WAVEFORM FILTER - DIPOLE	SURFACE WAVE FILTER	ON		''	''
	LOW FREQ CUTOFF	1500	Hz	''	''
	HIGH FREQ CUTOFF	5000	Hz	''	''

ACOUSTIC TCC CONTROL PARAMETERS

MEASUREMENT TYPE	PARAMETER	VALUE	UNITS	INTERVAL (ft)	
GENERAL TCC PARAMETERS	AGC	ON		TOP	BOTTOM
	SUBCYCLE LENGTH	50		''	''
	SUBSET	1		''	''
GENERAL MONOPOLE TCC PARAMETERS	STACK LEVEL	2		''	''
	DSP FILTER	ON		''	''
FULL WAVE MONOPOLE TCC PARAMETERS	AGC WINDOW	8064	us	''	''
	SAMPLE PERIOD	24		''	''
	RX DELAY	0	us	''	''

GENERAL DIPOLE TCC PARAMETERS	STACK LEVEL	2		
	DSP FILTER	ON		
INLINE DIPOLE TCC PARAMETERS	ACQ WINDOW	0		US
	SAMPLE PERIOD	84		
CROSS DIPOLE TCC PARAMETERS	RX DELAY	0		US
	ACQ WINDOW	14400		US
	SAMPLE PERIOD	72		
	RX DELAY	0		US

CURVE DESCRIPTION REPORT

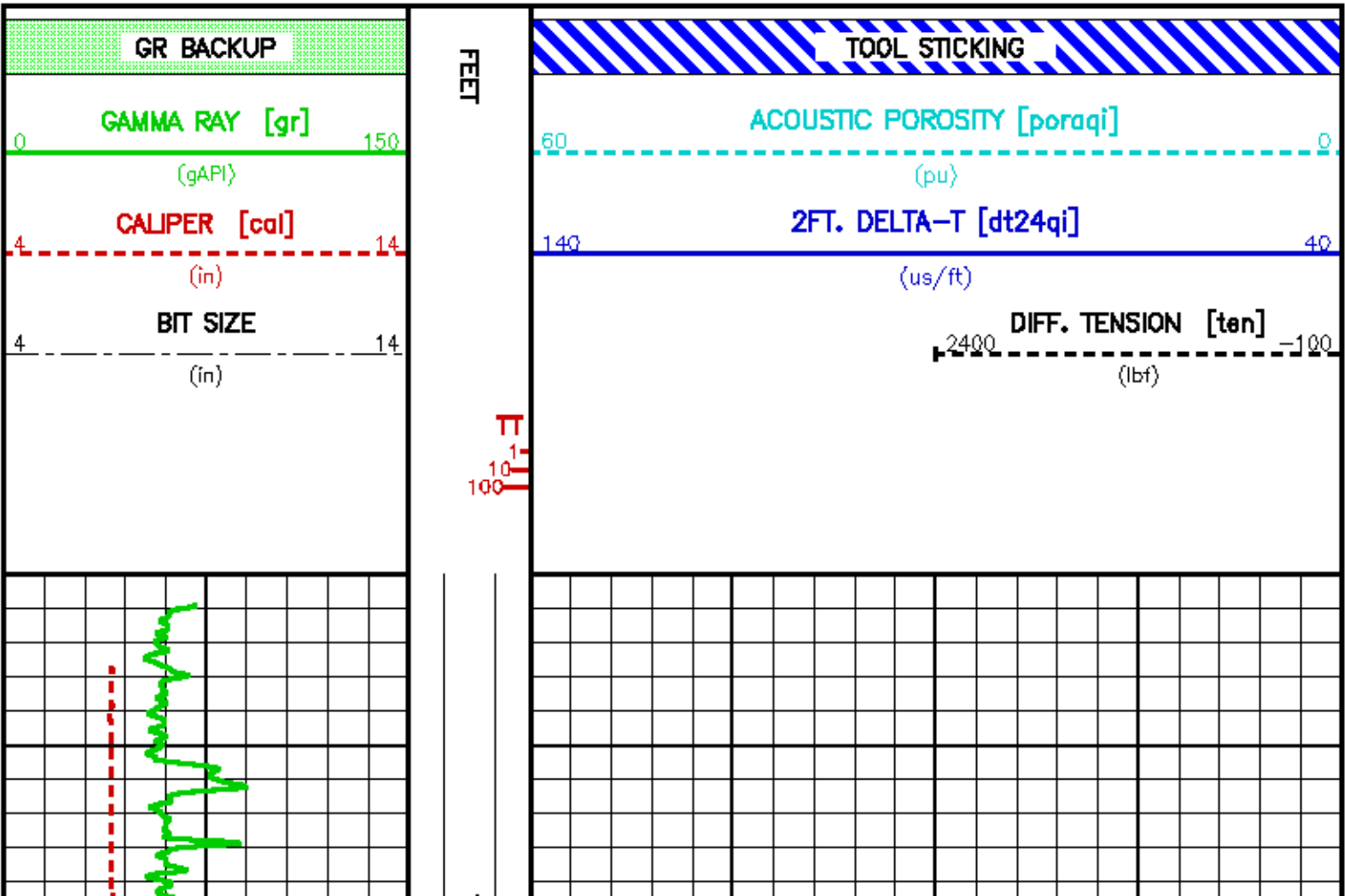
CURVE NAME	CREATION DATE	CURVE DESCRIPTION
F1:BIT	Nov 13 08:52:20 2010	BIT SIZE
F1:CAL	Nov 13 08:52:20 2010	CALIPER
F1:DT24QI	Nov 13 08:52:20 2010	SLOWNESS OVER 24-INCH INTERVAL
F1:GR	Nov 13 08:52:20 2010	GAMMA RAY
F1:PORAQI	Nov 13 08:52:20 2010	ACOUSTIC POROSITY
F1:TEN	Nov 13 08:52:20 2010	DIFFERENTIAL TENSION
F1:TTQI	Nov 13 08:52:20 2010	INTEGRATED TRAVELTIME FROM ACOUSTIC SLOWNESS

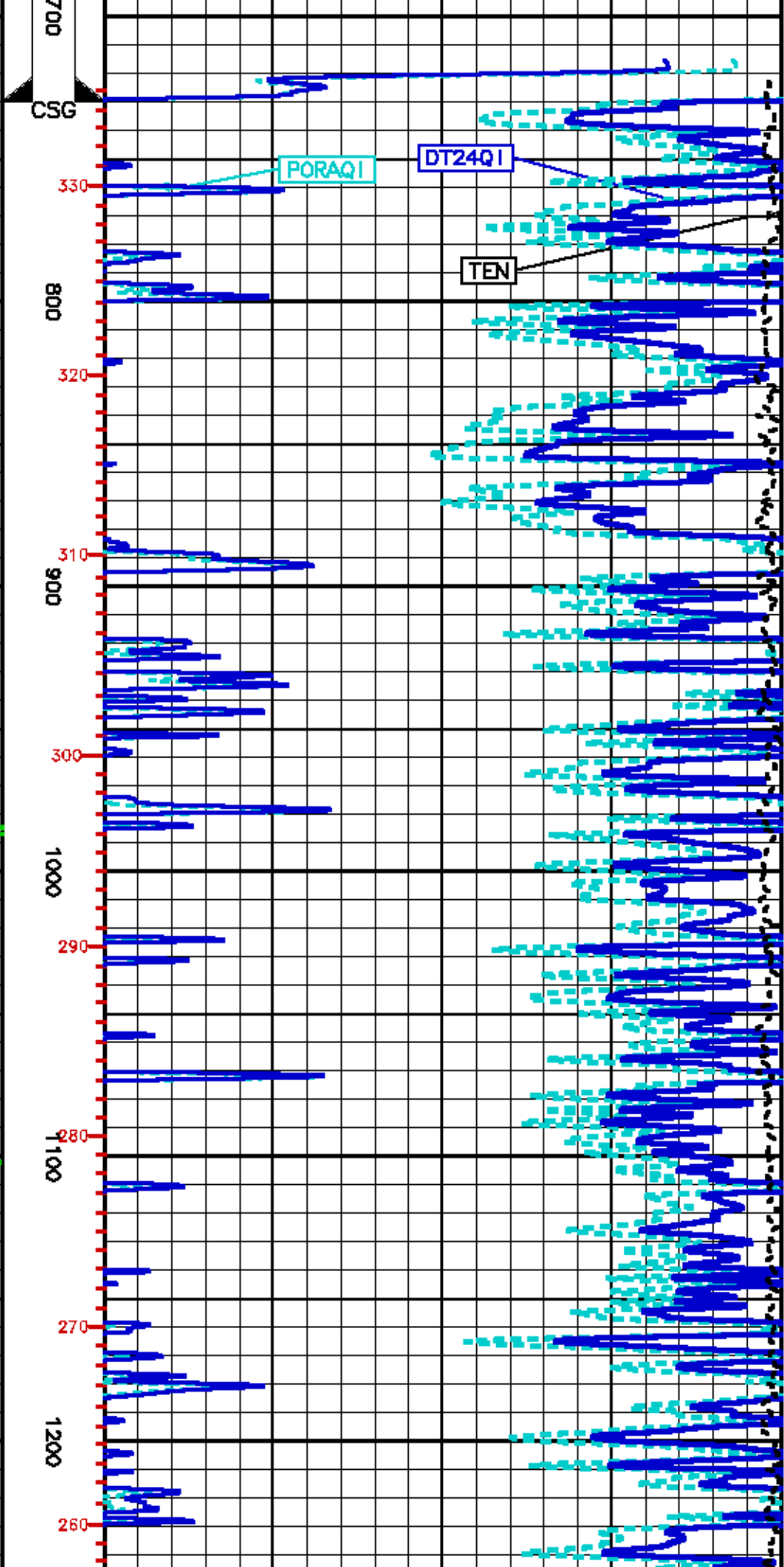
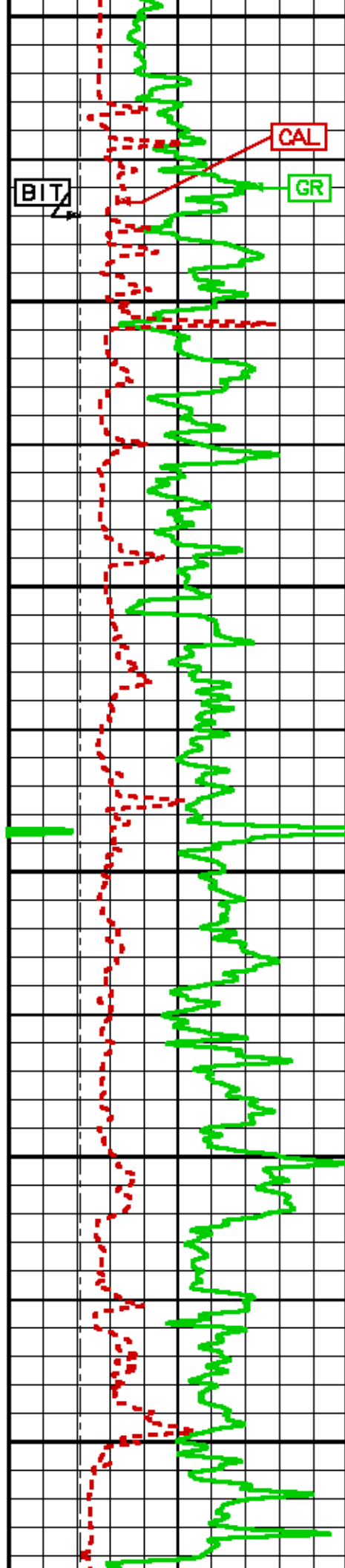
CURVE MEASURE POINT OFFSET

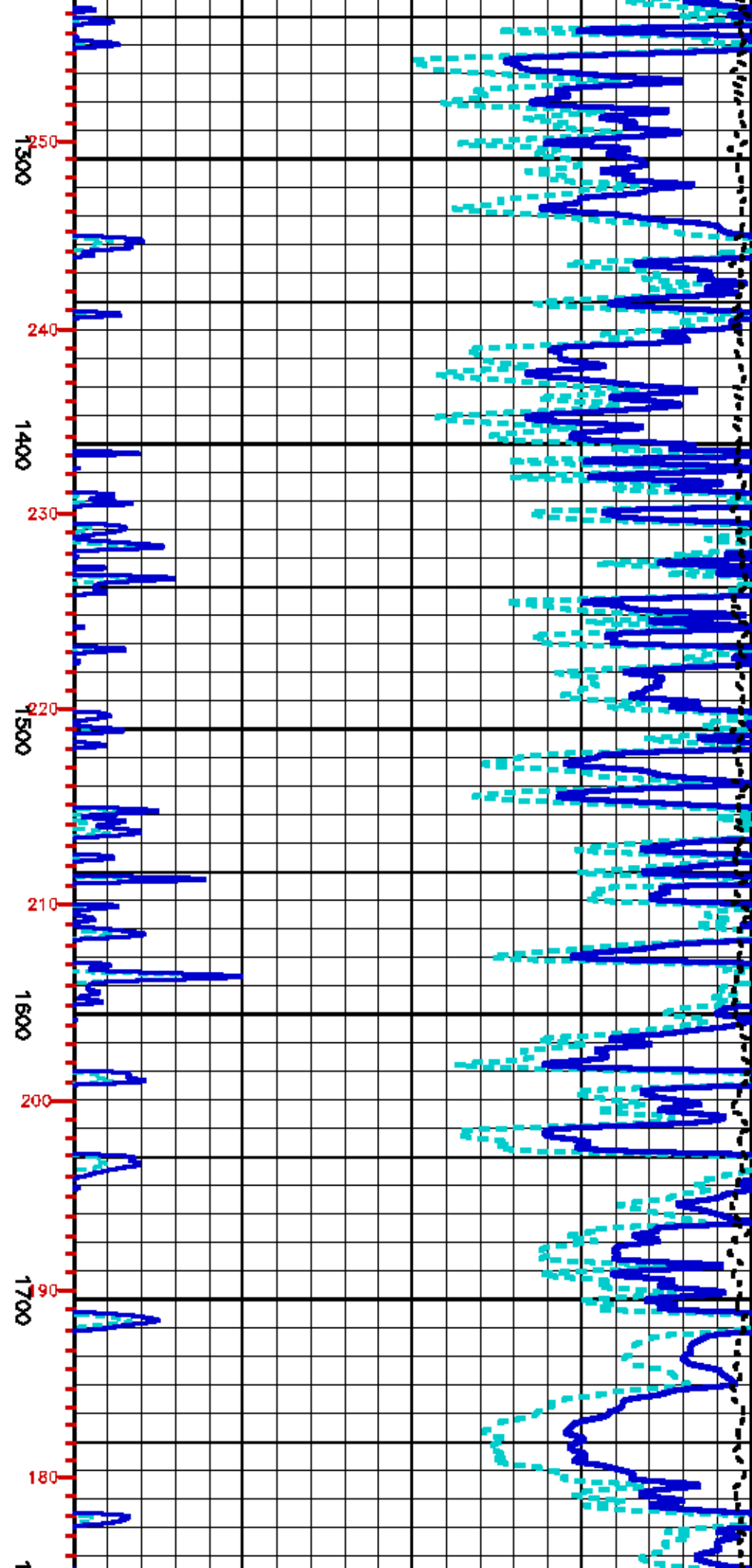
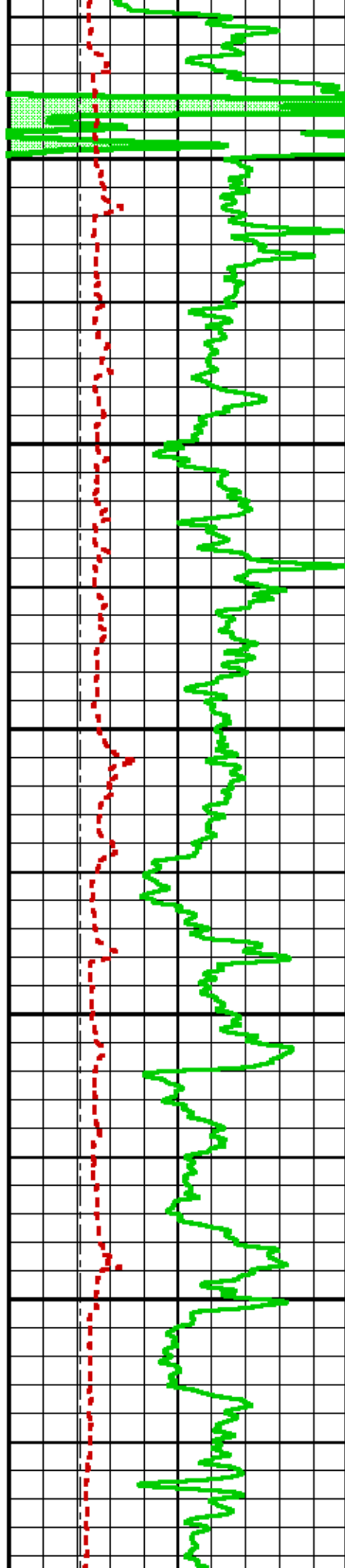
CURVE	OFFSET (ft)	CURVE	OFFSET (ft)	CURVE	OFFSET (ft)	CURVE	OFFSET (ft)
BIT	0.00	DT24QI	25.50	PORAQI	25.50		
CAL	96.50	GR	114.00	TEN	0.00		

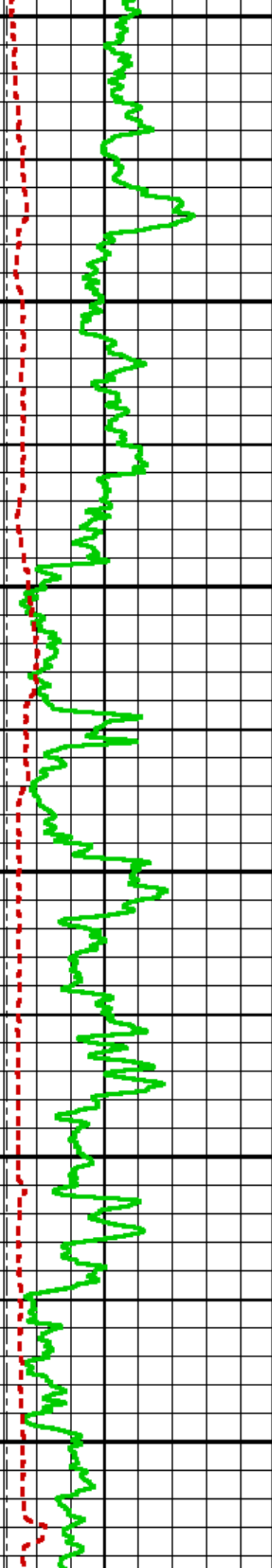
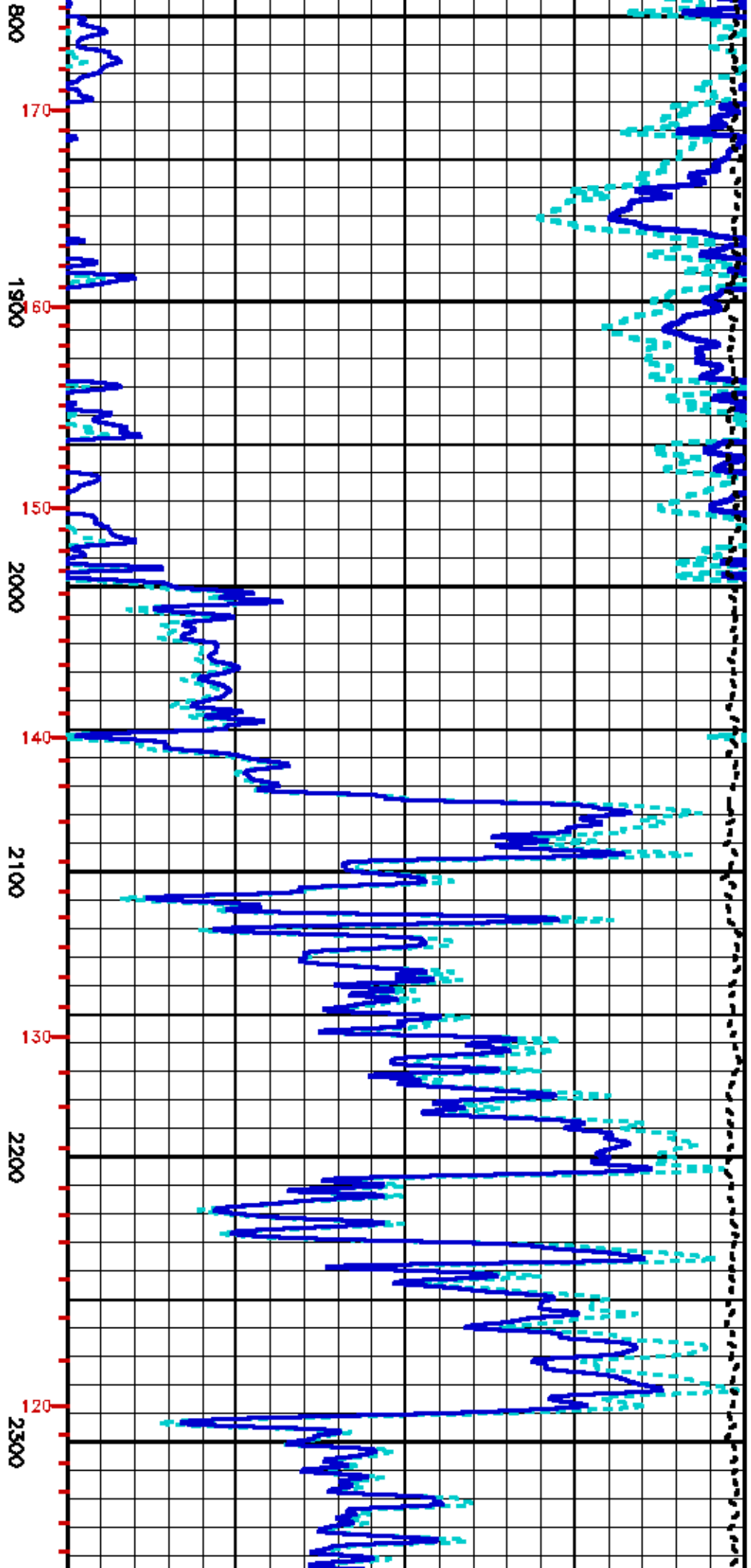
Presentation : rka4232:/dat1a/15358/aeouSTIC_MAIN.pdf [2"/100" Scale]
Plot Interval : 809.25 - 3528.5 Feet

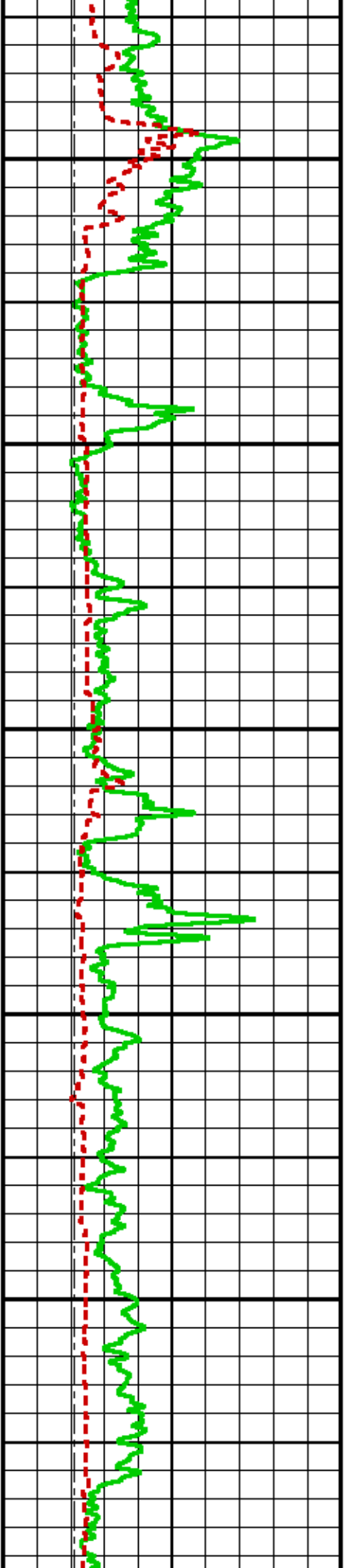
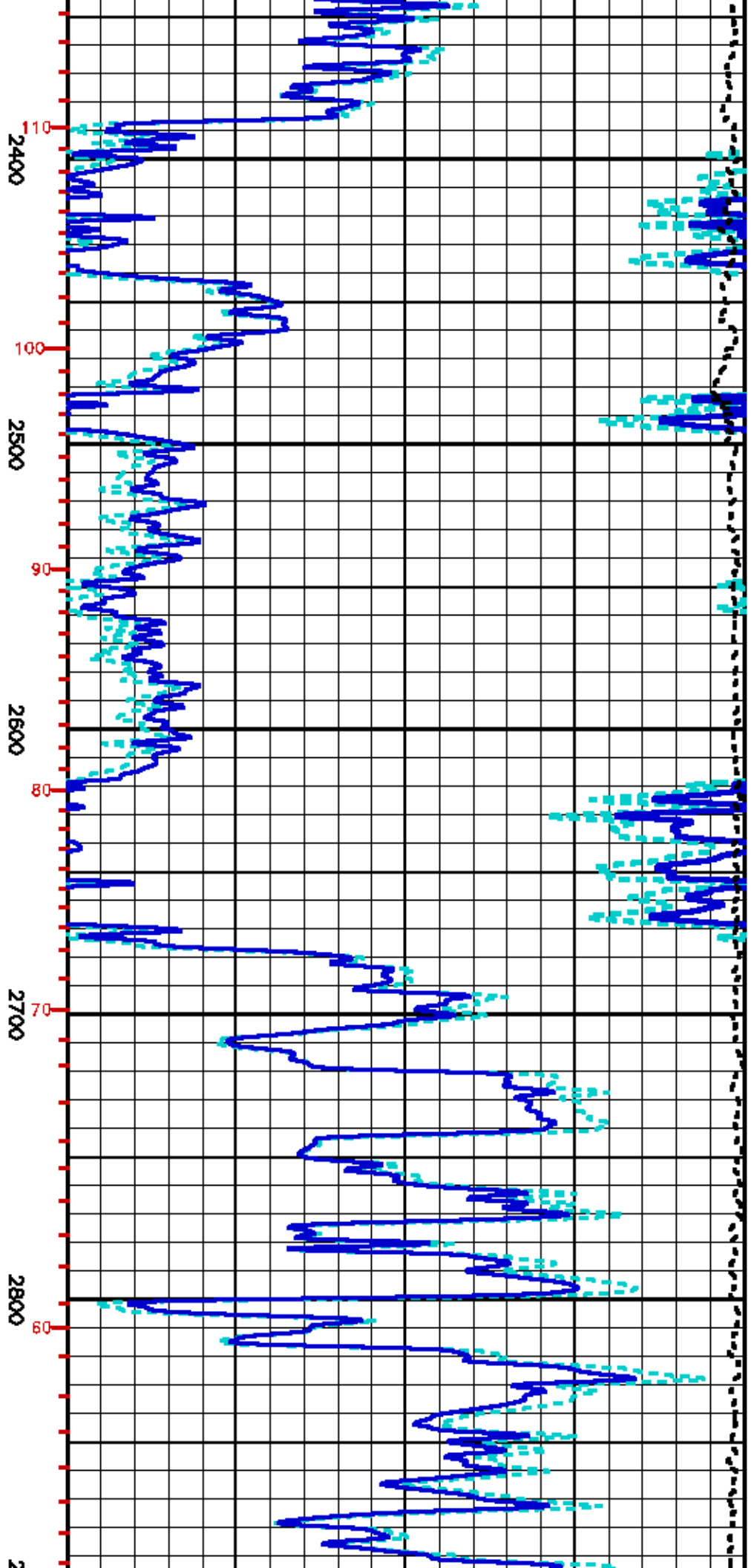
Data File 1 : F1 : rka4232:/dat1a/15358/m7711206.aiff
Created On : Nov 13 08:52:20 2010
Company : GRADIENT RESOURCES, INC.
Well : 13-36
Field : FALLON I
File Interval : 594.75 - 3528.5 Feet
Out : m77112

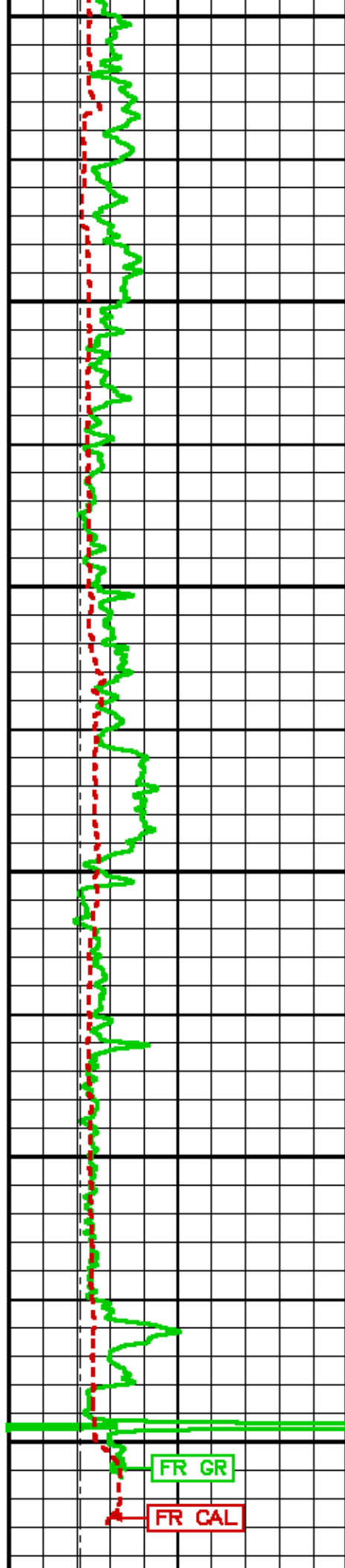
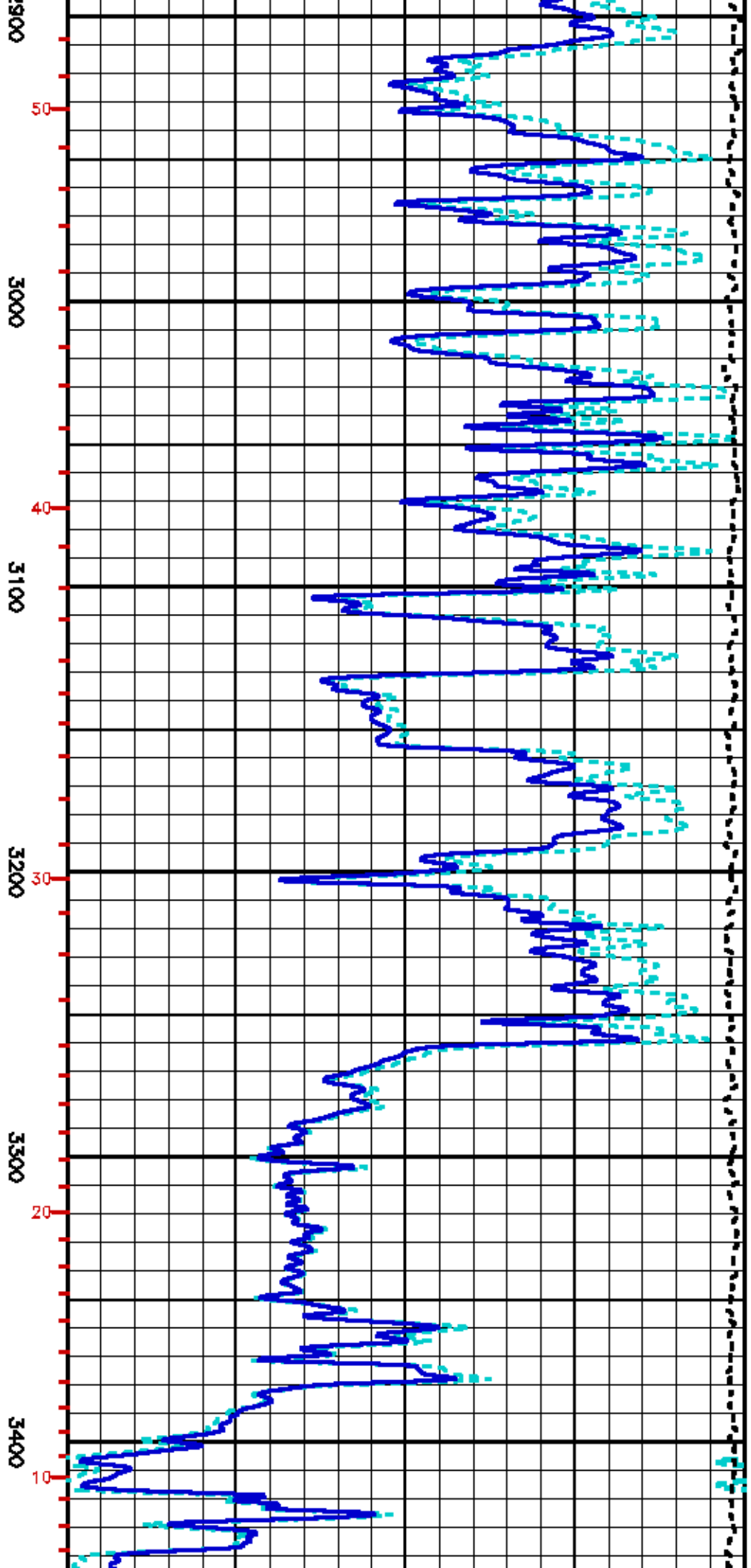


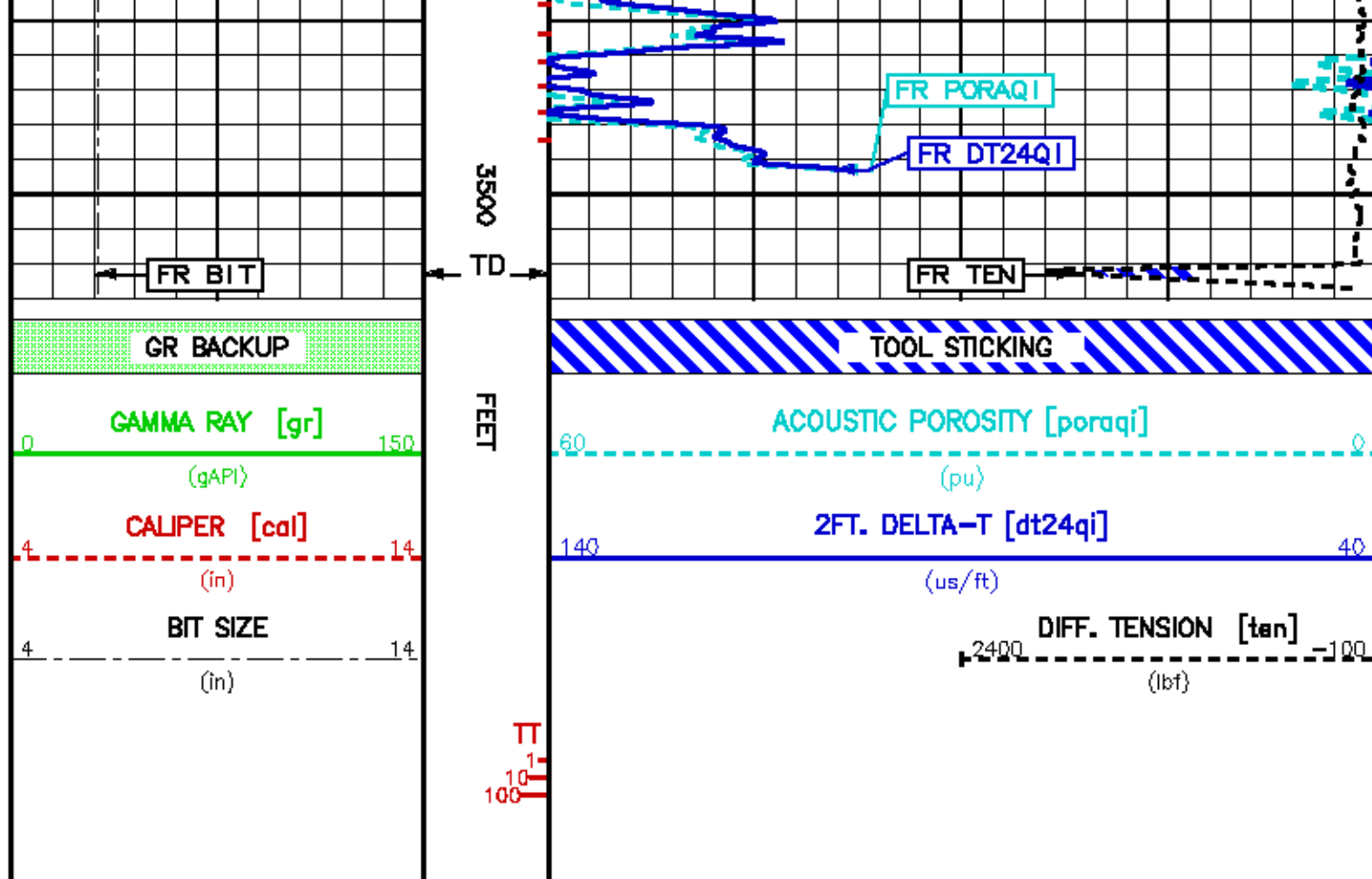












REPEAT LOG

ECLIPS 6.11 Aug 06, 2010

Sat Nov 13 10:55:51 2010

Perplot /main/62

Cplot

Pdf_Cpp /main/16

Fileview 5.50

PARAMETER AND FILTER SUMMARY REPORT

FILE: /data/15358/m7711205.prm
 LOGGING MODE: DEPTH DIRECTION: UP
 TOP DEPTH: 3210.500 ft BOTTOM DEPTH: 3535.561 ft

SYMMETRIC FILTER

MEASUREMENT TYPE	PARAMETER	VALUE	UNITS	INTERVAL (ft)	
Y AXIS CALIPER	FILTER ()	medium (1)		TOP	BOTTOM
TENSION	FILTER ()	medium (1)		"	"
GR	FILTER ()	medium (1)		"	"
CALIPER	FILTER ()	medium (1)		"	"
	FILTER (.h)	medium (1)		"	"
	FILTER (.l)	medium (1)		"	"
DT24	FILTER ()	light (2)		"	"

BOREHOLE & CEMENT

MEASUREMENT TYPE	PARAMETER	VALUE	UNITS	INTERVAL (ft)	
BIT SIZE	BIT SIZE	6.125	1n	TOP	BOTTOM

ACOUSTIC AVAN CORRELATION

MEASUREMENT TYPE	PARAMETER	VALUE	UNITS	INTERVAL (ft)	
MONOPOLE DELTA T	FORMATION TYPE	GENERIC (MEDIUM)		TOP	BOTTOM
	CORRELATION METHOD	WTH ROOT		"	"
	RESET TAPERS			"	"
	TAPER - LEFT END	50	us/ft	"	"
	TAPER - RIGHT END	180	us/ft	"	"
	FLOOR (UNIV. OPTION)	0.050		"	"
MONOPOLE COMPRESSIONAL	FORMATION TYPE	GENERIC (MEDIUM)		"	"
	CORRELATION METHOD	WTH ROOT		"	"
	RESET TAPERS			"	"
	TAPER - LEFT END	50	us/ft	"	"
	TAPER - RIGHT END	180	us/ft	"	"
	FLOOR (UNIV. OPTION)	0.050		"	"
MONOPOLE SHEAR	FORMATION TYPE	GENERIC (MEDIUM)		"	"
	GUIDE CURVE	DO NOT USE GUIDE		"	"
	RESET TAPERS			"	"
	TAPER - LEFT END	100	us/ft	"	"
	TAPER - RIGHT END	190	us/ft	"	"
MONOPOLE STONLEY	FORMATION TYPE	GENERIC (MEDIUM)		"	"
	RESET TAPERS			"	"
	TAPER - LEFT END	170	us/ft	"	"
	TAPER - RIGHT END	510	us/ft	"	"
DIPOLE SHEAR	FORMATION TYPE	GENERIC (MEDIUM)		"	"
	CORRELATION METHOD	WTH ROOT		"	"
	GUIDE CURVE	DO NOT USE GUIDE		"	"
	RESET TAPERS			"	"
	TAPER - LEFT END	100	us/ft	"	"
	TAPER - RIGHT END	700	us/ft	"	"

ACOUSTIC POROSITY

MEASUREMENT TYPE	PARAMETER	VALUE	UNITS	INTERVAL (ft)	
ACOUSTIC POROSITY	POROSITY TYPE	WYLLIE		TOP	BOTTOM
	DTmatrix	51.30	us/ft	"	"
	DTfluid	190.00	us/ft	"	"
	DTshale	100.00	us/ft	"	"
	MOD. WYLLIE PARM	2.25		"	"
	MOD. R-H-S PARM	2.00		"	"
DELTA T CURVE SELECTION	DT24 SOURCE	FIRST ARRIVAL DT24		"	"

ACOUSTIC PICK CONTROL

MEASUREMENT TYPE	PARAMETER	VALUE	UNITS	INTERVAL (ft)	
DELTA-T REJECTION RANGE	REJECTION DTmin	40	us/ft	TOP	BOTTOM
	REJECTION DTmax	180	us/ft	"	"
FIRST ARRIVAL PICK	SEARCH START OFFSET {sfan1°}	174	us	"	"
	SEARCH START OFFSET {sfan2°}	174	us	"	"
	SEARCH START OFFSET {sfan3°}	174	us	"	"
	SEARCH START OFFSET {sfan4°}	174	us	"	"
	SEARCH WINDOW LENGTH	1577	us	"	"
	THRESHOLD FACTOR	0.30		"	"
	THRESHOLD MINIMUM {sfan1°}	1.8	pot	"	"
	THRESHOLD MINIMUM {sfan2°}	1.8	pot	"	"
	THRESHOLD MINIMUM {sfan3°}	1.8	pot	"	"
	THRESHOLD MINIMUM {sfan4°}	1.8	pot	"	"
	ES THRESHOLD	OFF		"	"

ACOUSTIC QUALITY CONTROL

MEASUREMENT TYPE	PARAMETER	VALUE	UNITS	INTERVAL (ft)	
CYCLE SKIP LIMIT	CYCLE SKIP LIMIT	100	us	TOP	BOTTOM
ACOUSTIC DIFF TEN LIMIT	DIFF TENSION LIMIT	500	lbF	"	"

ACOUSTIC WAVEFORM FILTER

MEASUREMENT TYPE	PARAMETER	VALUE	UNITS	INTERVAL (ft)	
WAVEFORM FILTER - DELTA T	SURFACE WAVE FILTER	ON		TOP	BOTTOM
	LOW FREQ CUTOFF	4000	Hz	"	"
	HIGH FREQ CUTOFF	20000	Hz	"	"
WAVEFORM FILTER - FULLWAVE	SURFACE WAVE FILTER	ON		"	"
	LOW FREQ CUTOFF	2000	Hz	"	"
	HIGH FREQ CUTOFF	20000	Hz	"	"
WAVEFORM FILTER - STONELEY	SURFACE WAVE FILTER	ON		"	"

WAVEFORM FILTER - DIPOLE	LOW FREQ CUTOFF	500	Hz	''	''
	HIGH FREQ CUTOFF	5500	Hz	''	''
	SURFACE WAVE FILTER	ON		''	''
	LOW FREQ CUTOFF	1500	Hz	''	''
	HIGH FREQ CUTOFF	5000	Hz	''	''

ACOUSTIC TCC CONTROL PARAMETERS

MEASUREMENT TYPE	PARAMETER	VALUE	UNITS	INTERVAL (ft)	
GENERAL TCC PARAMETERS	AGC	ON		TOP	BOTTOM
	SUBCYCLE LENGTH	50		''	''
	SUBSET	1		''	''
GENERAL MONOPOLE TCC PARAMETERS	STACK LEVEL	2		''	''
	DSP FILTER	ON		''	''
FULL WAVE MONOPOLE TCC PARAMETERS	AGC WINDOW	8064	us	''	''
	SAMPLE PERIOD	24		''	''
	RX DELAY	0	us	''	''
GENERAL DIPOLE TCC PARAMETERS	STACK LEVEL	2		''	''
	DSP FILTER	ON		''	''
INLINE DIPOLE TCC PARAMETERS	AGC WINDOW	0	us	''	''
	SAMPLE PERIOD	64		''	''
	RX DELAY	0	us	''	''
CROSS DIPOLE TCC PARAMETERS	AGC WINDOW	14400	us	''	''
	SAMPLE PERIOD	72		''	''
	RX DELAY	0	us	''	''

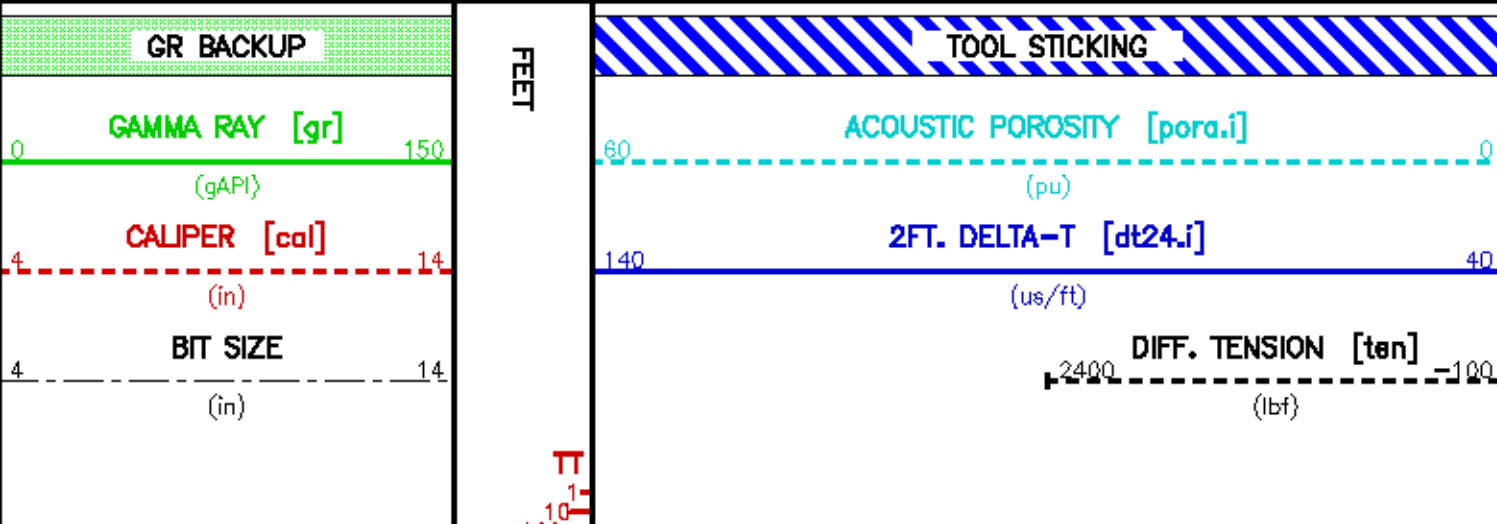
CURVE DESCRIPTION REPORT

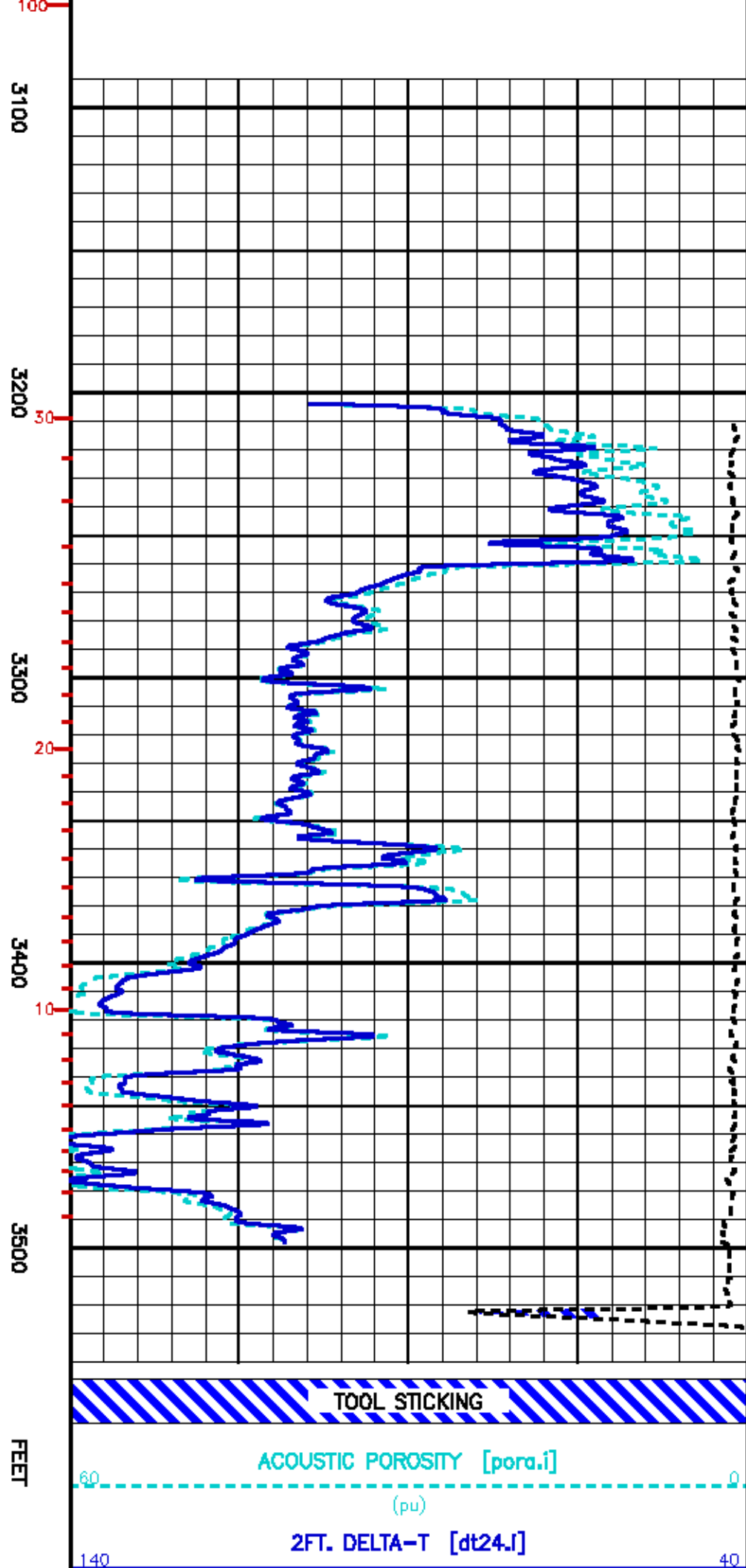
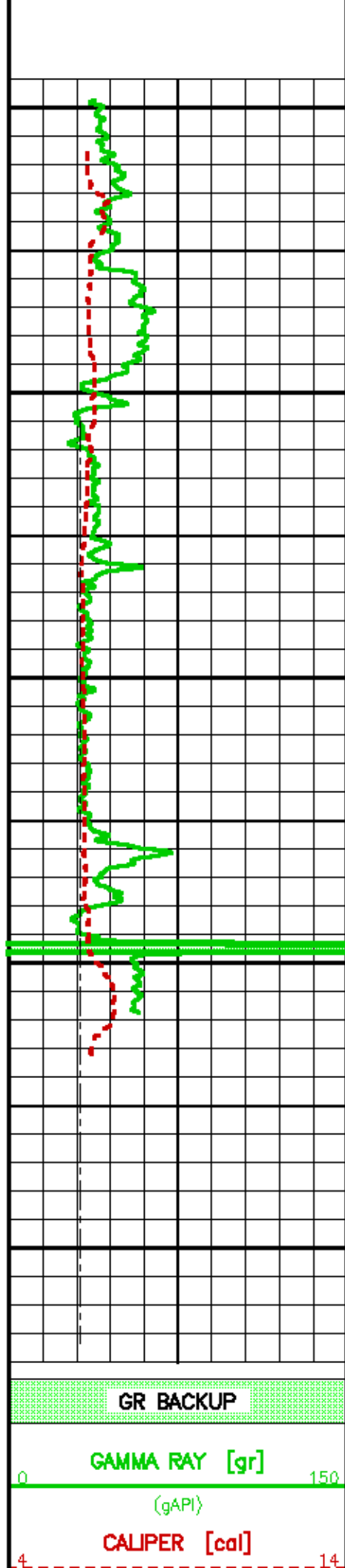
CURVE NAME	CREATION DATE	CURVE DESCRIPTION
F1:BIT	Nov 13 08:33:52 2010	BIT SIZE
F1:CAL	Nov 13 08:33:52 2010	CALIPER
F1:DT24QI	Nov 13 08:33:52 2010	SLOWNESS OVER 24-INCH INTERVAL
F1:GR	Nov 13 08:33:52 2010	GAMMA RAY
F1:PORAQI	Nov 13 08:33:52 2010	ACOUSTIC POROSITY
F1:TEN	Nov 13 08:33:52 2010	DIFFERENTIAL TENSION
F1:TTQI	Nov 13 08:33:52 2010	INTEGRATED TRAVELTIME FROM ACOUSTIC SLOWNESS

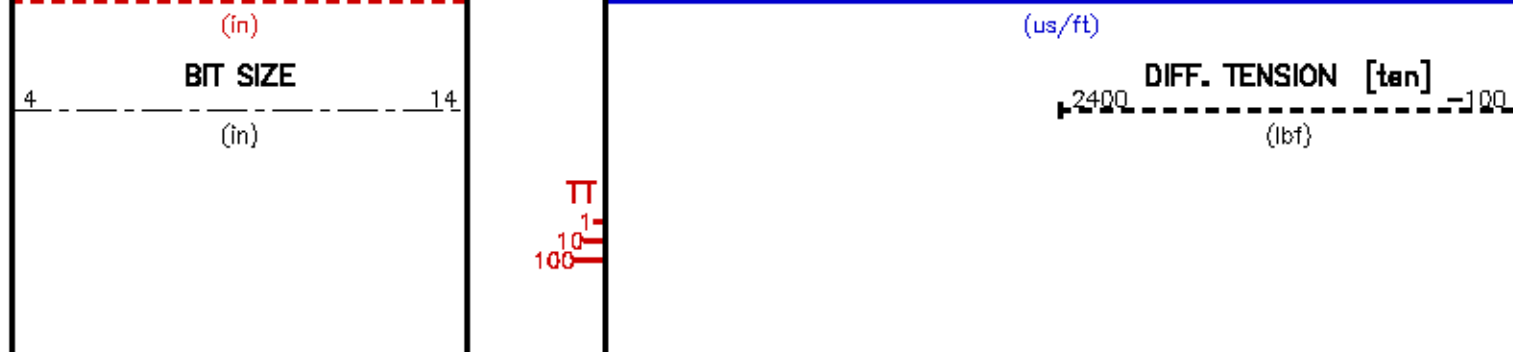
CURVE MEASURE POINT OFFSET

CURVE	OFFSET (ft)	CURVE	OFFSET (ft)	CURVE	OFFSET (ft)	CURVE	OFFSET (ft)
BIT	0.00	DT24QI	23.50	PORAQI	23.50		
CAL	98.50	GR	114.00	TEN	0.00		

Presentation	: rls4232:/dat1a/15358/aeousTTC_REPEAT.pdf [2"/100' Scale]
Plot Interval	: 3087.75 - 3533.5 Feet
Data File 1	: F1 : rls4232:/dat1a/15358/m7711205.off
Created On	: Nov 13 08:33:52 2010
Company	: GRADIENT RESOURCES, INC.
Well	: 13-36
Field	: FALLON I
File Interval	: 3083.25 - 3533.5 Feet
Oct	: m77112







CALIBRATION / VERIFICATION SUMMARY

Source File: /cd11a/15558/m77182.sp1

GR PRIMARY CALIBRATION SUMMARY

TOOL #: 1329XA 10203001 DATE/TIME PERFORMED: Mon Nov 1 11:51:17 2010

UNIT #: 3885TD ML4232 CALB JIG #: 4702NK DA-321

	BACKGROUND (cts/s)	CALBTR ON (cts/s)	CR DIFF (cts/s)	MULT	BACKGROUND (gAPI)	CALBTR ON (gAPI)	CALBTR (gAPI)
GR	308.96	1182.98	874.0	0.172	53.02	203.02	150
			830.0 860.0				

GR PRIMARY VERIFICATION SUMMARY

TOOL #: 1329XA 10203001 DATE/TIME PERFORMED: Mon Nov 1 11:56:11 2010

UNIT #: 3885TD ML4232 VERI JIG #: 4702NK DA-321

	BACKGROUND (cts/s)	CALBTR ON (cts/s)	MULT	BACKGROUND (gAPI)	CALBTR ON (gAPI)	DIFF. (gAPI)
GR	305.80	1189.67	0.172	52.48	204.17	151.69
						149.00 150.00

GR BEFORE LOG VERIFICATION SUMMARY

TOOL #: 1329XA 10203001 DATE/TIME PERFORMED: Sat Nov 13 02:53:10 2010 DAYS SINCE CAL: 11

UNIT #: 3885TD ML4232 VERI JIG #: 4702NK DA-321

	BACKGROUND (cts/s)	CALBTR ON (cts/s)	MULT	BACKGROUND (gAPI)	CALBTR ON (gAPI)	DIFF. (gAPI)
GR	450.31	1350.71	0.172	77.28	231.81	154.53
						141.69 161.85

GR AFTER LOG VERIFICATION SUMMARY

TOOL #: 1329XA 10203001 DATE/TIME PERFORMED: Sat Nov 13 10:50:43 2010 DAYS SINCE CAL: 11

UNIT #: 3885TD ML4232 VERI JIG #: 4702NK DA-321

	BACKGROUND (cts/s)	CALBTR ON (cts/s)	MULT	BACKGROUND (gAPI)	CALBTR ON (gAPI)	DIFF. (gAPI)
GR	720.98	1606.64	0.172	123.73	275.73	152.00
						144.63 184.53

CAL PRIMARY CALIBRATION SUMMARY

TOOL #: 2234XA 173976

DATE/TIME PERFORMED: Fri Oct 29 13:37:06 2010

UNIT #: 3885TD ML4232

	SMALL RING	LARGE RING	MULT	ADD	SMALL RING (In)	LARGE RING (In)
CALIPER	1303.2	2078.0	0.00774	-2.09189	8.000	14.000

CAL BEFORE LOG VERIFICATION SUMMARY

TOOL #: 2234XA 173976 DATE/TIME PERFORMED: Sat Nov 13 06:15:40 2010 DAYS SINCE CAL: 14

UNIT #: 3885TD ML4232

	I.D.	MULT	ADD	I.D. (In)
CALIPER	1110.0	0.00774	-2.22977	6.366

CAL AFTER LOG VERIFICATION SUMMARY

TOOL #: 2234XA 173976 DATE/TIME PERFORMED: Sat Nov 13 08:26:29 2010 DAYS SINCE CAL: 14

UNIT #: 3885TD ML4232

	I.D.	MULT	ADD	I.D. (In)
CALIPER	1146.4	0.00774	-2.22977	6.648
				6.888 6.699

XMAC_OR PRIMARY CALIBRATION SUMMARY

TOOL #: 1678MC 10338528

DATE/TIME PERFORMED: Thu Oct 28 13:27:15 2010

UNIT #: 3885TD ML4232

ORIENTATION #: 4401XB 10080238

	DEV (deg)	QA (mG)	MEAS RB (deg)	RB OFFSET (deg)	ROTATED RB (deg)
ORIT TBM CHECK	89.4	1000.3	0.7		
		990.0 1010.0	357.5 2.5		
XMAC-F1 ORIENT			339.6	339.6	0.0

INSTRUMENT CONFIGURATION

Source File: /dall1a/15358/m77112*-tdg

CABLEHEAD

Diameter : 3.38"
 Length : 6.50'
 Weight : 24 lbs
 Series : CBL338
 Mnemonic : CBLH

SHOVEL

Diameter : 3.38"
 Length : 3.50'
 Weight : 68 lbs
 Series : 3844X0



139.16'

CABLEHEAD TOP 138.41'

TRIM 900

Diameter : 3.63"
Length : 3.83'
Weight : 62 lbs
Series : 3981XA
Mnemonic : TTRW

MTS COMMON REMOTE

Diameter : 3.63"
Length : 6.38'
Weight : 128 lbs
Series : 3514XB
Mnemonic : MTS

DIGITAL SPECTRUM 02

Diameter : 3.63"
Length : 7.31'
Weight : 130 lbs
Series : 13280A
Mnemonic : DSL

COMPENSATED NEUTRON

Diameter : 3.63"
Length : 7.58'
Weight : 150 lbs
Series : 24480A
Mnemonic : CN

Z-DENS LOG

Diameter : 4.88"
Length : 11.22'
Weight : 380 lbs
Series : 22340A
Mnemonic : ZDL

KNUCKLE JOINT (DOUBLE)

Diameter : 3.38"
Length : 4.88'
Weight : 90 lbs
Series : 30380A
Mnemonic : KJNT

HIGH DEFINITION INDUCTION TOOL

Diameter : 3.62"
Length : 27.13'
Weight : 415 lbs
Series : 15150A
Mnemonic : HDIL

TEMP MP 127.71'
RM MP 127.48'

GR MP 114.28'

LSN MP 107.70'
SSN MP 107.30'

CU MP 97.04'
LSO MP 96.32'
SSO MP 96.02'

SP MP 75.87'

XMTR MP 69.80'

4 ARM BOX SPRING CENTRALIZER

Diameter : 3.38"
Length : 4.12'
Weight : 72 lbs
Series : 4341XA
Mnemonic : CENT

DIGITAL ORIENTATION

Diameter : 3.38"
Length : 10.81'
Weight : 110 lbs
Series : 4401XB
Mnemonic : ORIT

ARRAY ACOUSTILOG ELECTRONICS, 8 CHANNEL

Diameter : 3.38"
Length : 7.82'
Weight : 102 lbs
Series : 1677EA
Mnemonic : XMAC

CROSS MULTIPOLE ARRAY ACOUSTILOG

Diameter : 3.75"
Length : 10.81'
Weight : 224 lbs
Series : 1678MC
Mnemonic : XMF1

SHEAR WAVE ACOUSTILOG

Diameter : 3.63"
Length : 5.00'
Weight : 135 lbs
Series : 1678FB
Mnemonic : XMAC

MULTI-POLE ARRAY ACOUSTIC

Diameter : 3.88"
Length : 7.82'
Weight : 170 lbs
Series : 1678BA
Mnemonic : XMAC

MULTI-POLE ARRAY ACOUSTIC

Diameter : 3.38"
Length : 4.32'
Weight : 58 lbs
Series : 1678FA
Mnemonic : MAC

4 ARM BOX SPRING CENTRALIZER

Diameter : 3.38"
Length : 4.12'
Weight : 72 lbs
Series : 4341XA
Mnemonic : CENT

SLAM ADAPTER

Diameter : 3.38"

ORIENT MP 47.14'

R8 33.81'
R7 33.41'
R6 32.81'
R5 32.41'
R4 31.81'
R3 31.41'
R2 30.81'
R1 30.41'

MONOPOLE T2 21.81'
QUADRUPOLE T5 21.81'

X-DIPOLE T3 20.18'
Y-DIPOLE T4 20.18'

MONOPOLE T1 18.41'

Diameter : 3.38"
Length : 6.27'
Weight : 110 lbs
Series : 35160A
Memoria : SLAM

TEMPERATURE

Diameter : 3.38"

BULL PLUG 3 3/8

TOTAL LENGTH: 138.16'
TOTAL WEIGHT: 2327 lbs
MAX DIAMETER: 0'4.68"

TEMP MP 0:00'



COMPANY

GRADIENT RESOURCES, INC.

WELL

13-36

FIELD

FALLON I

COUNTY

CHURCHILL

STATE NEVADA

FILE NO:

15358

API NO:

27-001-80440

LOCATION:

354742 E 4380820 N MDM
UTM NAD 83 ZONE 11N

ELEVATIONS:

KB 3825 FT

DF 3823 FT

GL 3820 FT

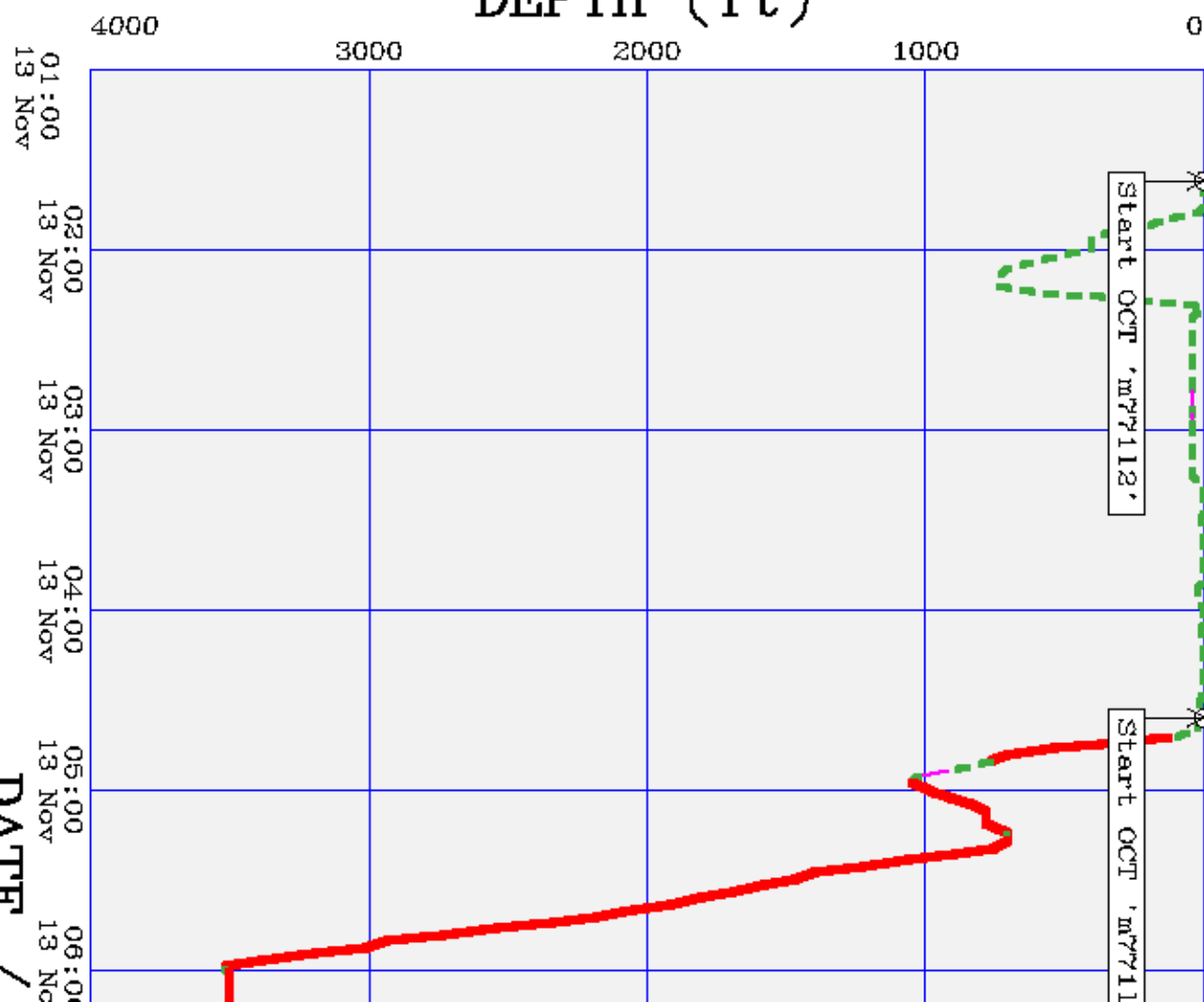
DATE

13-NOV-2010

Baker Atlas



DEPTH (ft)



FILE NAME : /data/15358/rad4232.jpo
FILE INTERVAL: 13 Nov 2010 01:37:14 to 13 Nov 2010 1
PLOT INTERVAL: 13 Nov 2010 01:00:00 to 13 Nov 2010 1

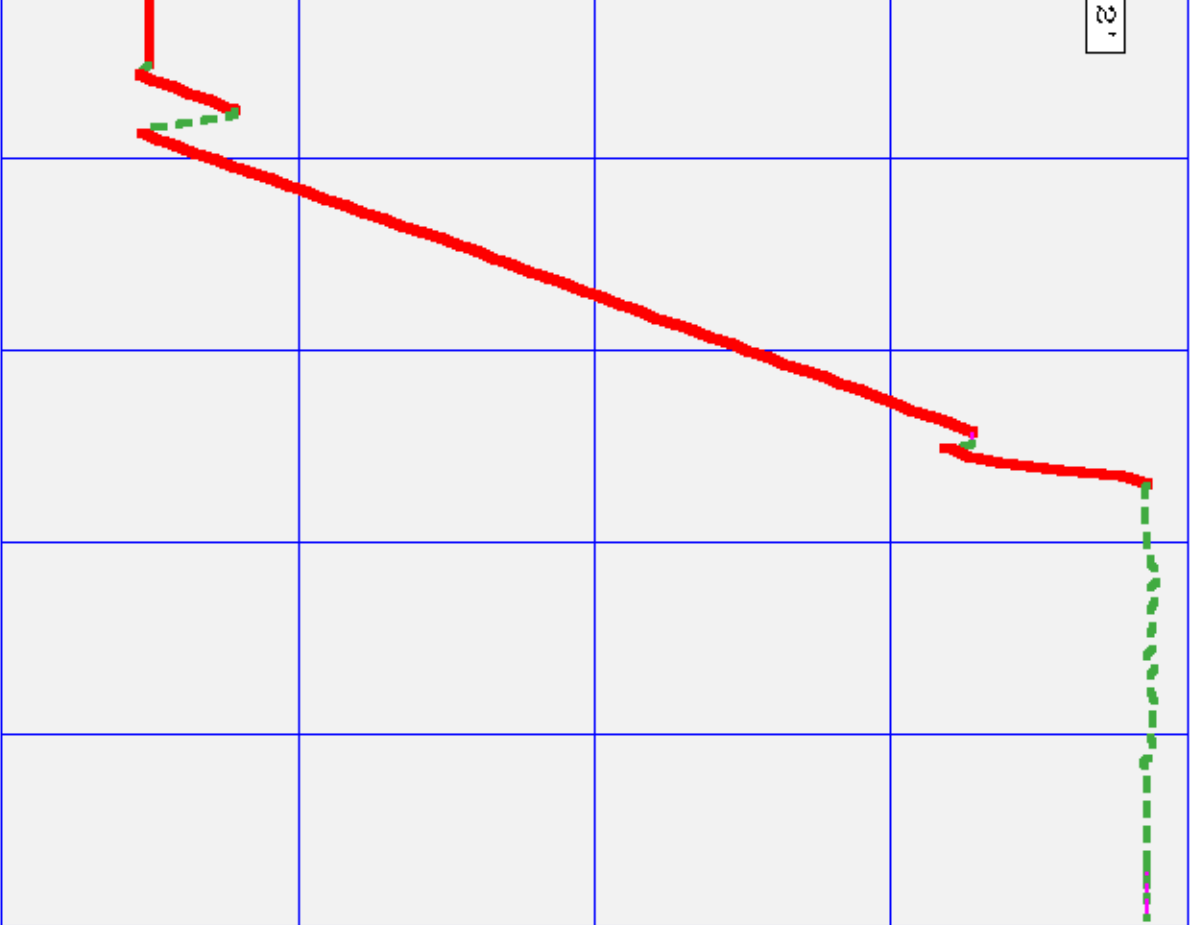
JOB PROGRESS

DATE /

S OVERVIEW

0:57:27
1:00:00

2'



TIME

07:00 08:00 09:00 10:00 11:00
13 Nov 13 Nov 13 Nov 13 Nov 13 Nov